

**木瓜期中考 2010.11**

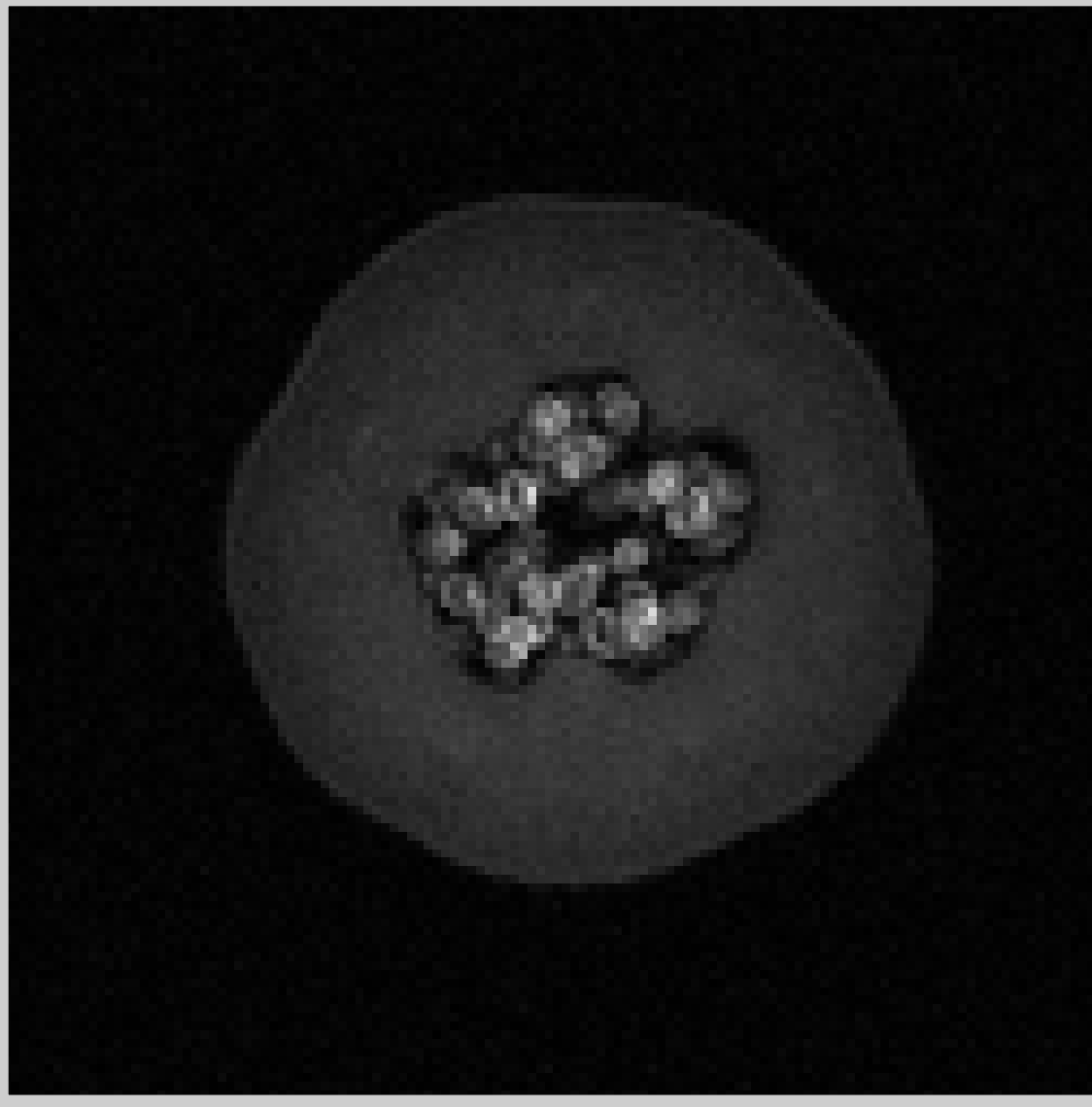
**Midterm on Papaya**

**Hsiao-Wen Chung, Ph.D.**

**Department of Electrical Engineering**

**National Taiwan University**

# First Trial on Papaya (3T Bruker)



**Spin echo**

**TR = 300**

**TE = min ~ 14.3**

**FOV = 12 cm**

**SLTH = 5 mm**

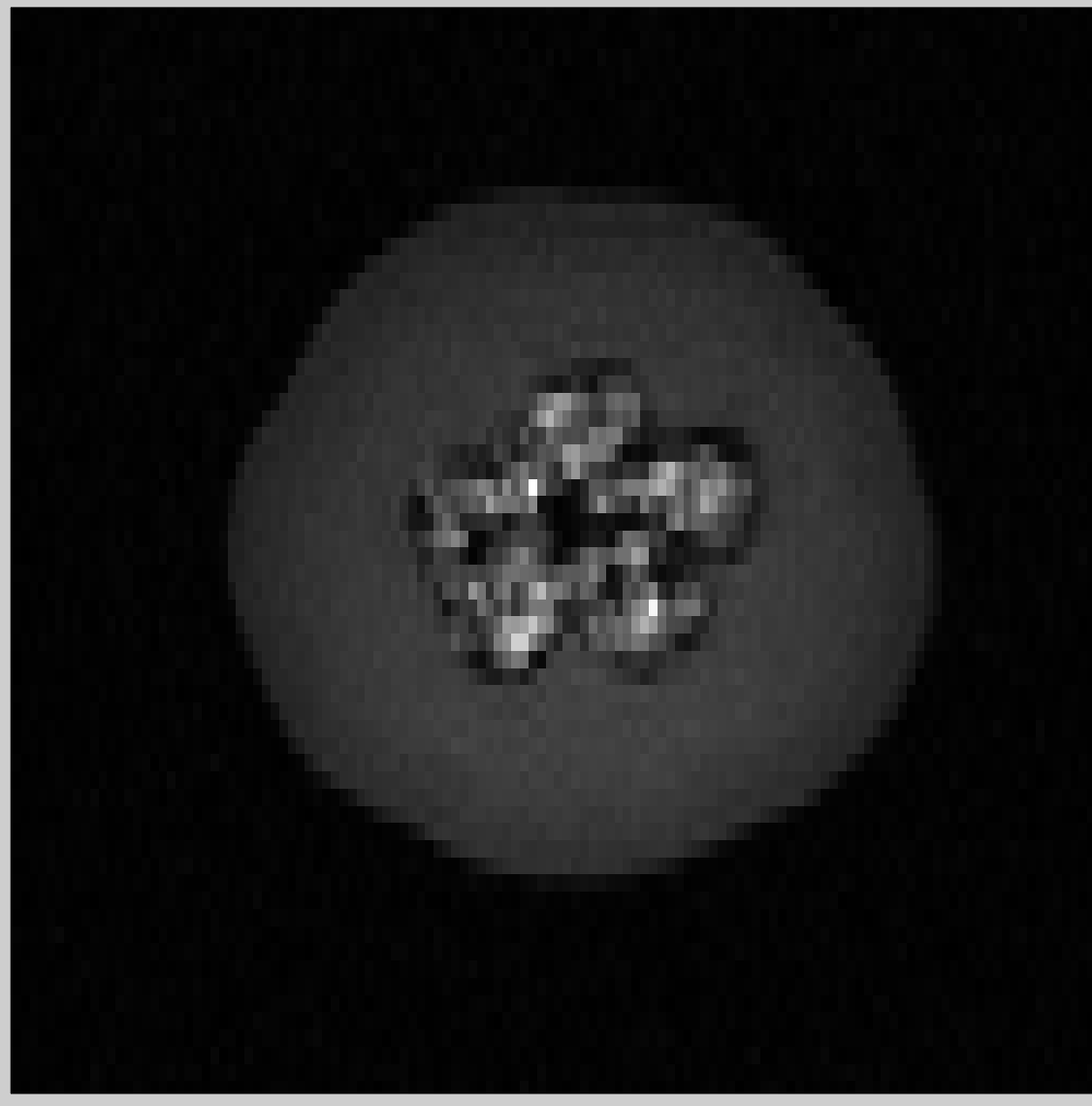
**BW = 50KHz**

**128x128**

**NEX = 1**

**Scan time = 0:38**

# Papaya by 吳至程、邱豐茂、林慶和



**Spin echo**

**TR = 150**

**TE = min ~ 14.3**

**FOV = 12 cm**

**SLTH = 8 mm**

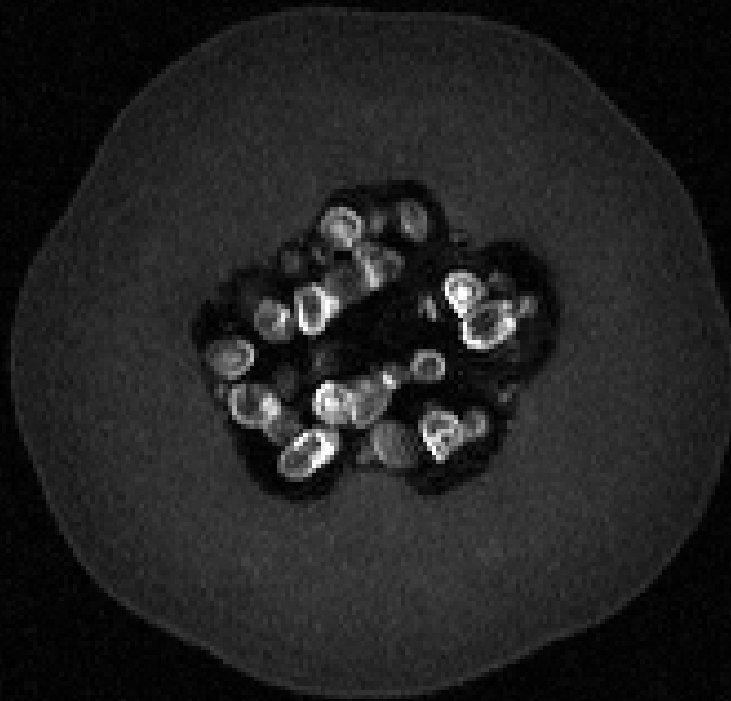
**BW = 50KHz**

**128x64**

**NEX = 4**

**Scan time = 0:38**

# Papaya by 趙子豪、李徹重、黃胤凱



**Spin echo**

**TR = 300**

**TE = min ~ 17.8**

**FOV = 12.3 cm**

**SLTH = 2.5 mm**

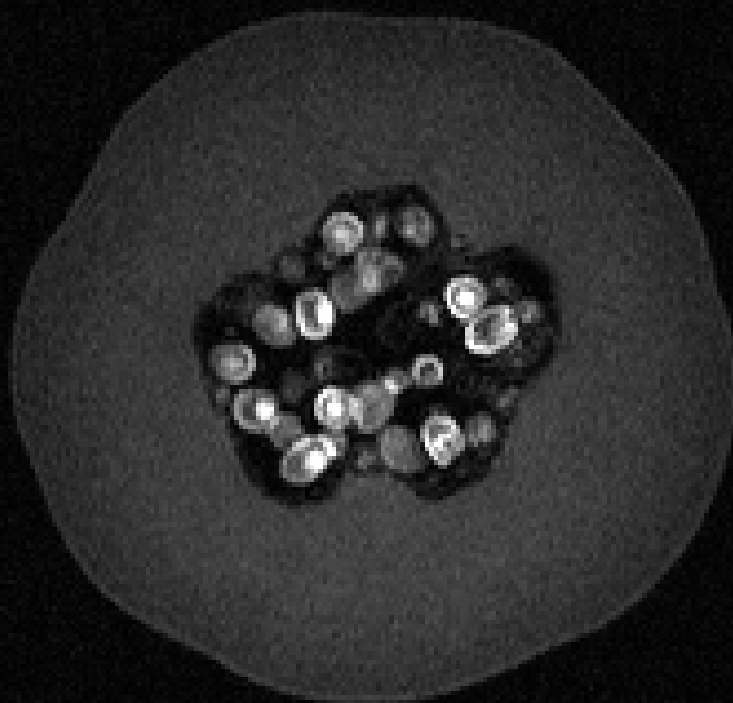
**BW = 25KHz**

**256x192**

**NEX = 8**

**Scan time = 7:40**

# Papaya by 黃怡君、姚乃維



**Spin echo**

**TR = 300**

**TE = min ~ 14.3**

**FOV = 12 cm**

**SLTH = 2.5 mm**

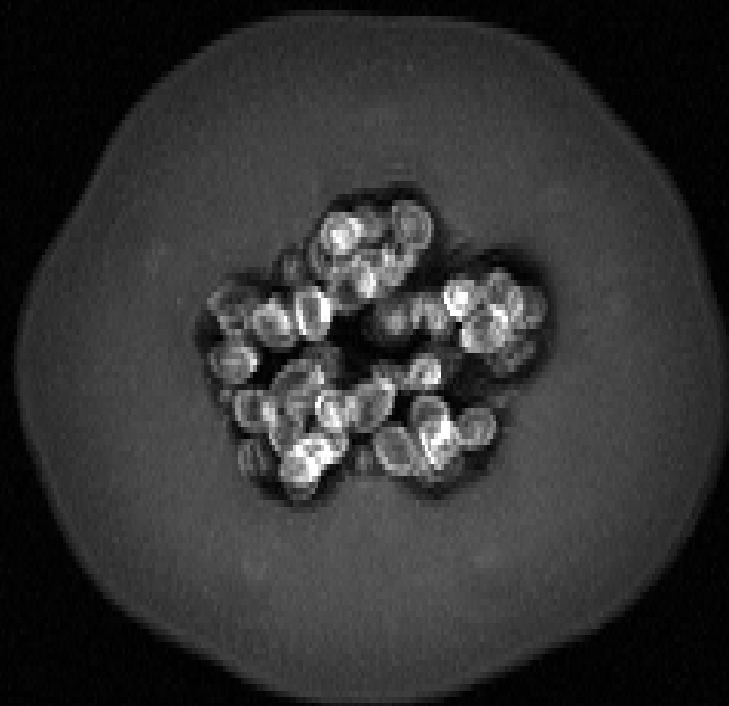
**BW = 50KHz**

**256x192**

**NEX = 10**

**Scan time = 9:36**

# Papaya by 陳威而、陳俊瑋



**Spin echo**

**TR = 300**

**TE = min ~ 17.8**

**FOV = 17 cm**

**SLTH = 7 mm**

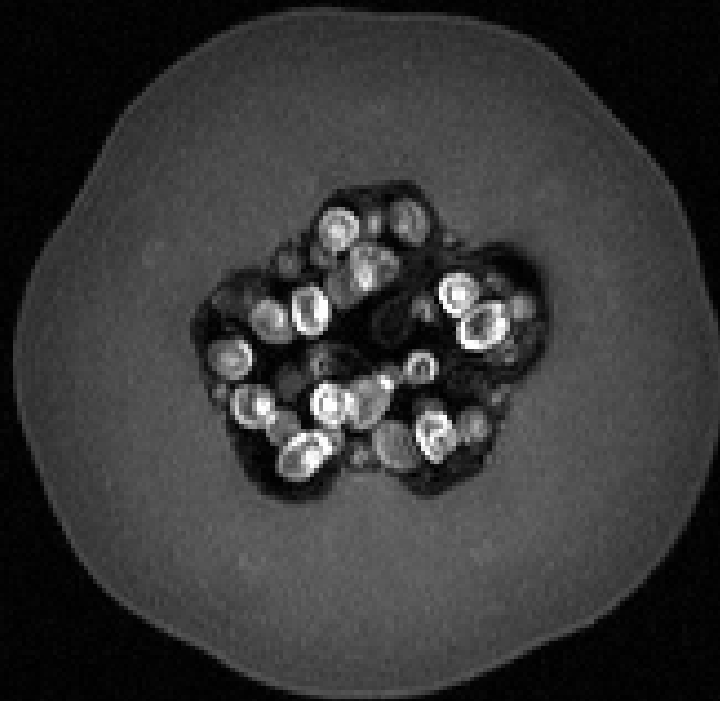
**BW = 50KHz**

**512x256**

**NEX = 8**

**Scan time = 10:14**

# Papaya by 吳宜螢、朱美嬾、何恭之



**Spin echo**

**TR = 600**

**TE = min ~ 14.3**

**FOV = 12.3 cm**

**SLTH = 3 mm**

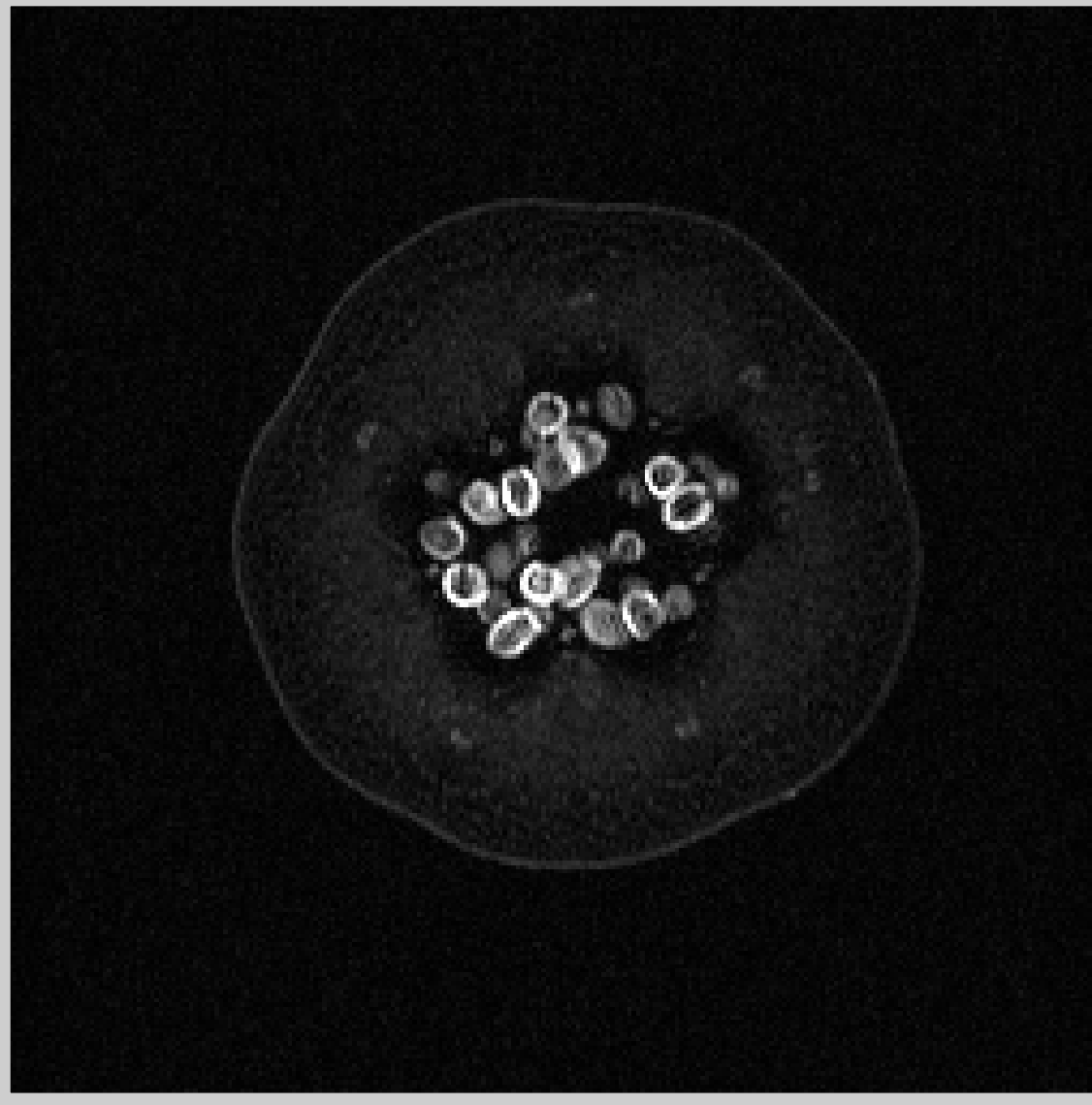
**BW = 50KHz**

**256x192**

**NEX = 10**

**Scan time = 19:02**

# Papaya by 許依婷、陳柏君



**Spin echo**

**TR = 3000**

**TE = 60**

**FOV = 12.3 cm**

**SLTH = 3 mm**

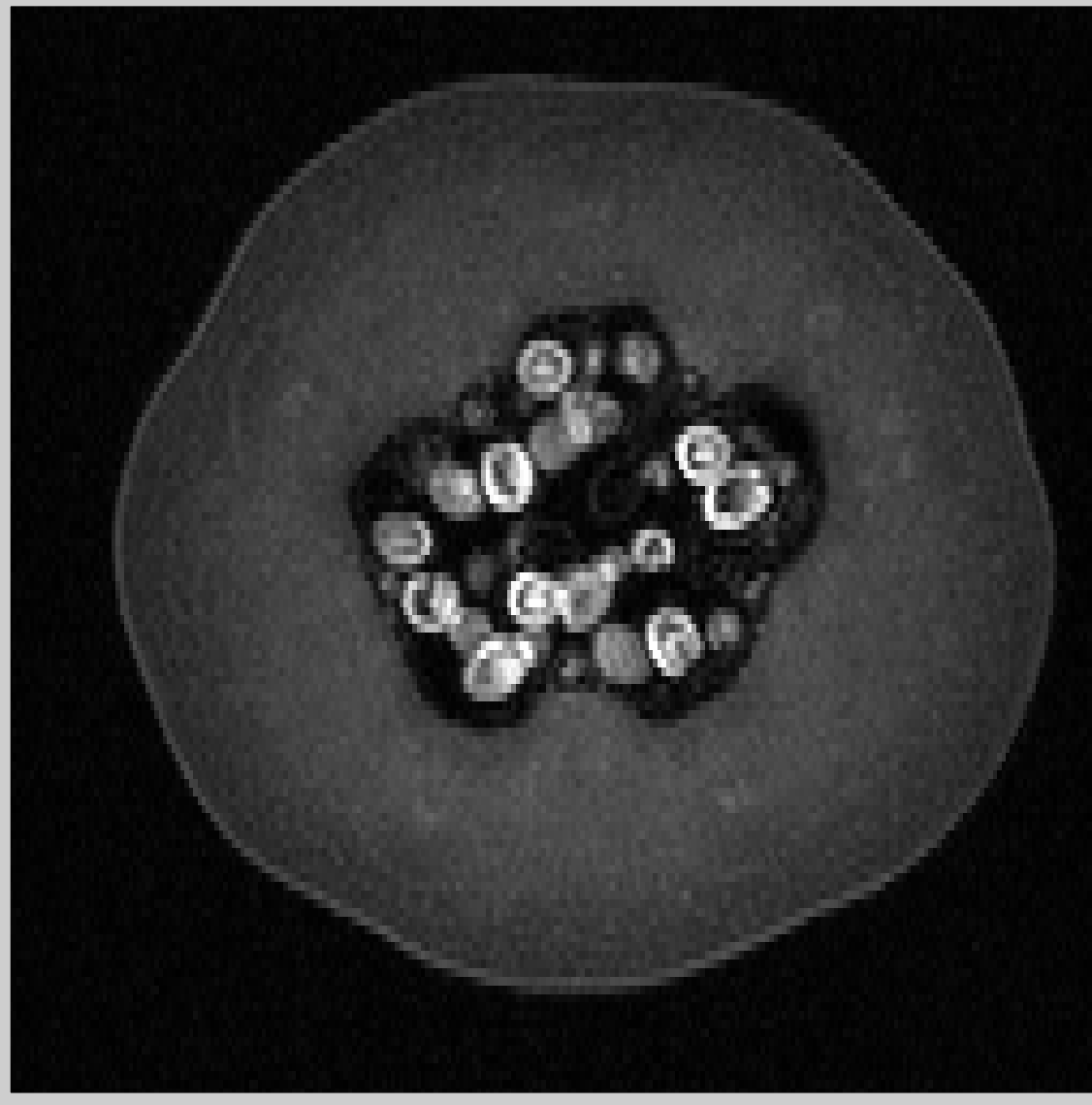
**BW = 50KHz**

**256x192**

**NEX = 2**

**Scan time = 19:30**

# Papaya by TA



**Spin echo**

**TR = 800**

**TE = 20**

**FOV = 9 cm**

**SLTH = 2 mm**

**BW = 50KHz**

**192x128**

**NEX = 16**

**Scan time = 27:20**